



Time setting

The professional LEDI® clocks can display the same time information, synchronized by a master clock or a time server.

Internal time base

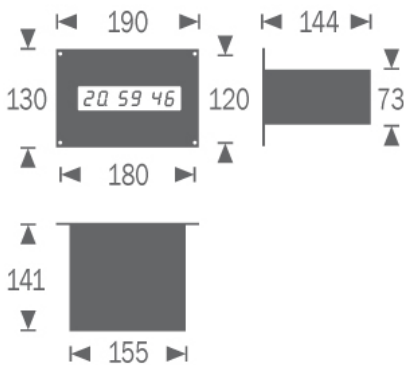
The LEDI® clock has its own temperature compensated TCXO time base which allows an accuracy about 0.1 sec / day between 0° to 40°C in case of synchronization loss.

Security

Backup of time information in case of mains absence, by lithium battery: 10 years.

Specifications

Power supply	230 VAC 50/60Hz 115VAC 50/60Hz
Certifications	CE, EN 62368, EN 55032, EN 55035, ROHS
Maximum consumption	
IP	30
MTBF	56 000 h
MTTR	10 min
Weight	~ 1kg
Dimensions	Front face: 190(l)x130(h) mm. Thickness: 73 mm - Depth: 141 mm
Digit height	Height of the hour, minute and second digits: 20mm
Maximal distance of legibility	7 meters
Operating temperature	-10 à 50°C
Electrical equipment classification	⚡ Classe 1 (en Power supply 230 VAC) ⚡ Class 3 (in 12, 24, 48 VDC or PoE)



LEDI® 2.S
NTP

Flush mount clock
NTP Synchronisation

Key features

- Perfectly silent, direct and accurate reading of time
- 7-segment red digits display hour, minute, second
- 12h or 24h mode
- SNMP (NTP Version)
- Configurable time/date alternation
- Brightness setting
- Case aluminium
- Its participation in the sustainable development, life span over 20 years
- 2 years warranty
- Synchronisation of up to 4 NTPv4 servers and setting of advanced NTP options (poll rate / burst / preference order)
- Time zone selection and automatic summer/winter time change
- Supervision by SNMP v1, V2c, v3, SYSLOG, Consultation of event logs
- Configurations accessible via http and/or https
- IPv4 / IPv6 protocols
- Stopwatch/timer: advanced options fully configurable and programmable (start time, end time, colour change...), control and configuration via web page, GTCHRONO or SNMP

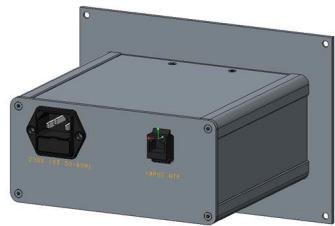
Synchronisation Input

- NTP – Ethernet 10/100 base T

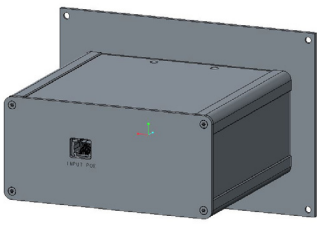
Storage conditions

Conditions	Temperature	Hygrometry	Maximum cumulative duration
Extreme	-20°C to 0°C	10 to 85% HR	48h
Extreme	40°C to 70°C	10 to 85% HR	48h
Normal	10°C to 40°C	10 to 85% HR	6 months

The product must be switched on for 4 hours every 3 months to maintain its characteristics.
See user guide for more information



Rear face for NTP/POE version
cable supplied: 3 m Ethernet CAT5E



Rear face for NTP/230 VAC version
and 2 m Power AC EU/IEC C13

LEDI® 2.S
NTP

ITEM CODE									
92212		/							
VERSION			↑	↑	↑	↑	↑		
NTP – Ethernet 10/100 base T		■	K						
DISPLAY									
Configurable LED display Red Green Yellow		■							
Hours Minutes Seconds Height 20mm				11					
Red Display									
Hours Minutes Height 20mm - Seconds Height 14mm				12					
Power supply									
230VAC/50-60Hz		■			0				
PoE (Power over Ethernet)					7				
18-36 VDC					3				
FRONT FACE									
Front face grey anodised aluminium dimensions: Lg.190 x Ht.130 mm		■				1			
Front face black anodised aluminium dimensions: Lg.190 x Ht.75 mm		■				2			
Front face grey anodised aluminium dimensions: Lg.174 x Ht.93 mm		■				4			
Grey anodized recessed front panel dimensions: 19" 2U		■				8			
OPTION									
Tropicalization		■					U		